

CLIENT

AklBeyti L.L.C.

DESIGNER

Zakaria Abdel Nabi

LOCATION

City hub mall Hawar Sports Club

DRAWING TITLE

GENERAL LAYOUT

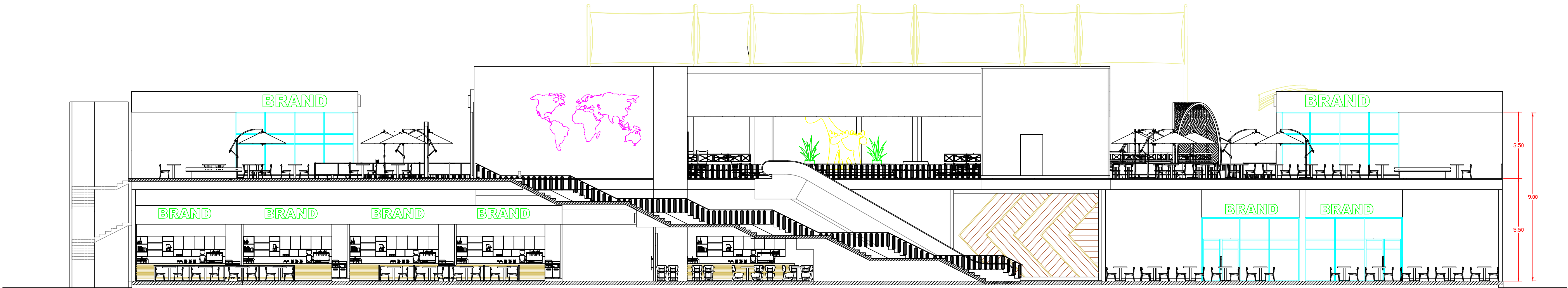
PROJECT NO.

SCALE: 1:100 MTS.

DRAWING NO.

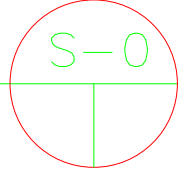
L-01

1-ALL DIMENSIONS ARE IN M.
2-DESIN IS ACCORDING TO THE EGYPTION CODE
3-ALL MATERIALS, SPECIFICATIONS ARE TO BE
CONFORMED WITH PROJECT SPECIFICATIONS.



SECTION A-A

SCALE: 1:100MTS.



KEY PLAN

CLIENT
AklBeyti L.L.C.

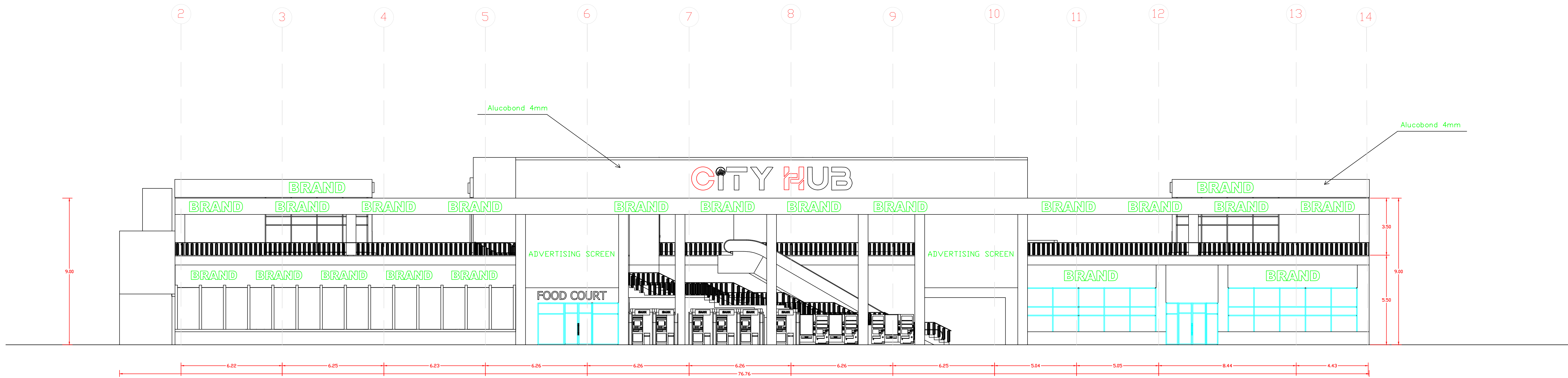
DESIGNER
Zakaria Abdel Nabi

LOCATION
City hub mall Hawar Sports Club

DRAWING TITLE
SECTION A-A

PROJECT NO. SCALE: 1:100 MTS.

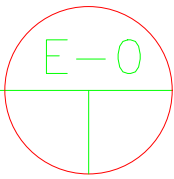
DRAWING NO. S-01



ELEVATION-01

SCALE:

1:100MTS.



GENERAL NOTES

1-ALL DIMENSIONS ARE IN M.
2-DESIN IS ACCORDING TO THE EGYPTION CODE
3-ALL MATERIALS SPECIFICATIONS ARE TO BE
CONFORMED WITH PROJECT SPECIFICATIONS.

CLIENT

AklBeyti L.L.C.

DESIGNER

Zakaria Abdel Nabi

LOCATION

City hub mall Hawar Sports Club

DRAWING TITLE

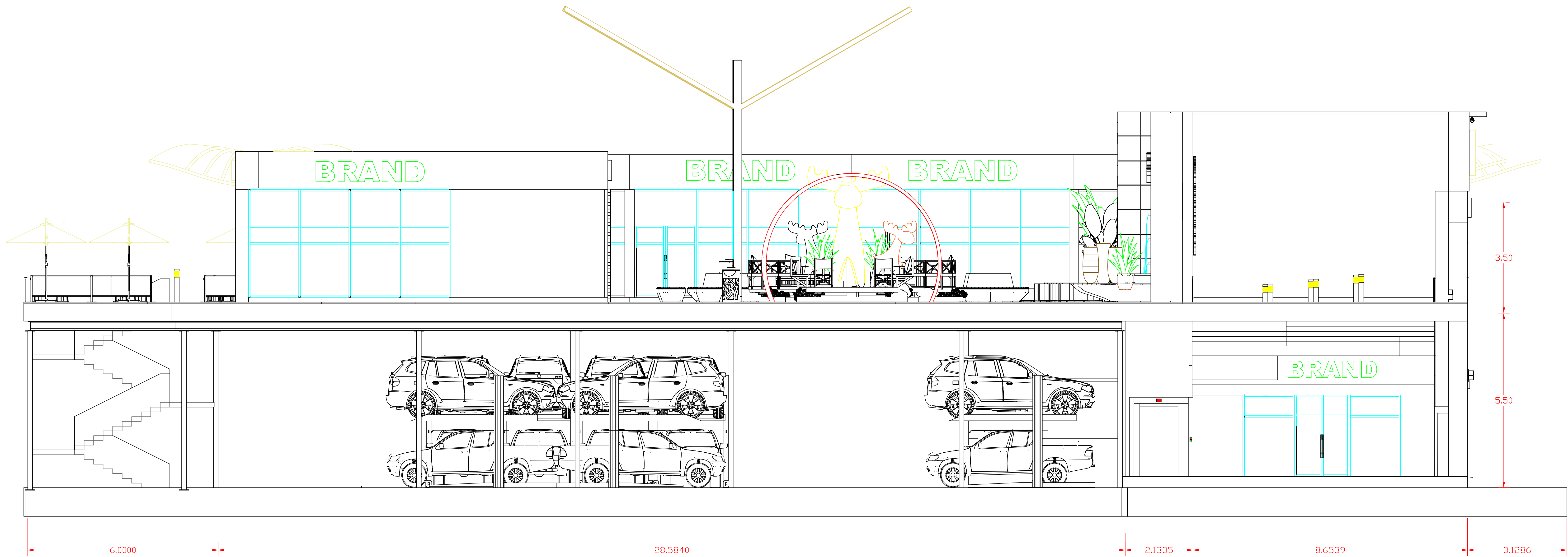
ELEVATION

PROJECT NO.

SCALE: 1:100 MTS.

DRAWING NO.

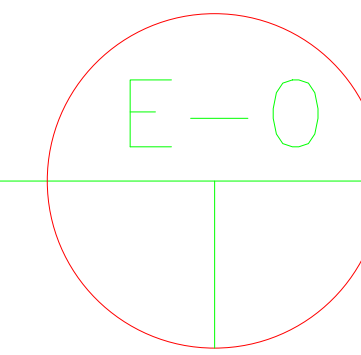
E-01



SIDE VIEW

SCALE:

1:50MTS.



GENERAL NOTES

1-ALL DIMENSIONS ARE IN M.
2-DESIN IS ACCORDING TO THE EGYPTION CODE
3-ALL MATERIALS SPECIFICATIONS ARE TO BE
CONFORMED WITH PROJECT SPECIFICATIONS.

CLIENT

AklBeyti L.L.C.

DESIGNER

Zakaria Abdel Nabi

LOCATION

City hub mall Hawar Sports Club

DRAWING TITLE

SIDE VIEW

PROJECT NO.

SCALE: 1:50 MTS.

DRAWING NO.

S-01

AkIBeyti L.L.C.

Zakaria Abdel Nabi

City hub mall Hawar Sports Club

GROUND FLOOR PLAN

SCALE: 1:100 MTS.

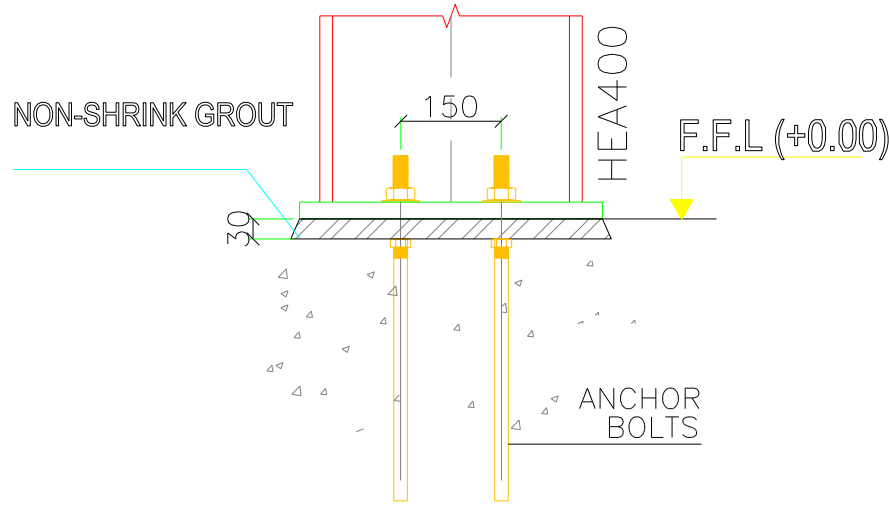
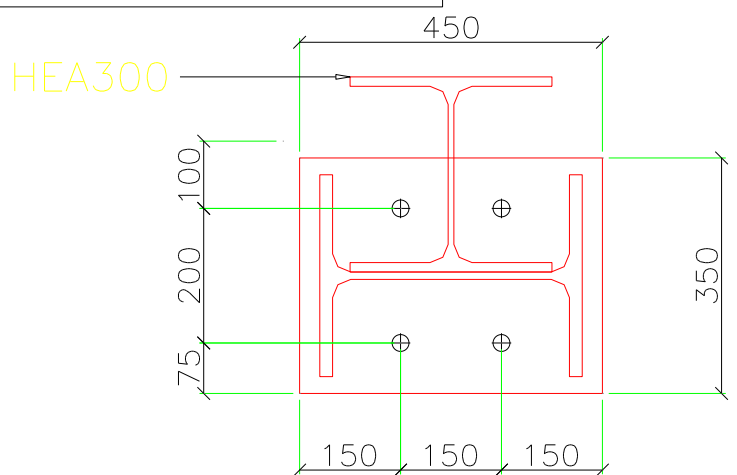
G-01



ANCHOR BOLT PLAN

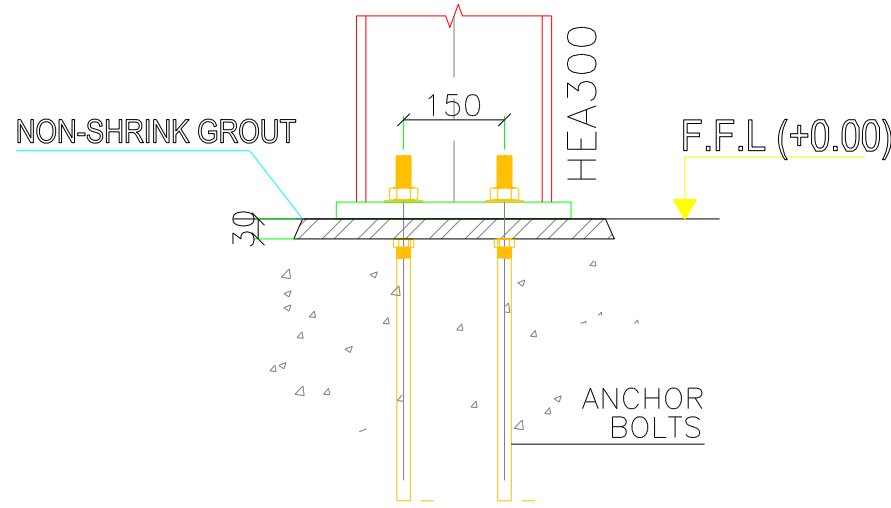
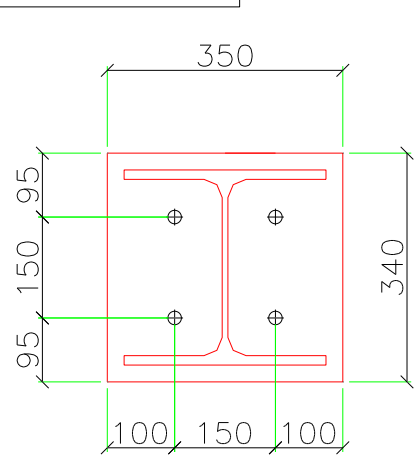
F.F.L(+0.00)

ANCHOR BOLT DIA = 25
PLATE THICKNESS = 25



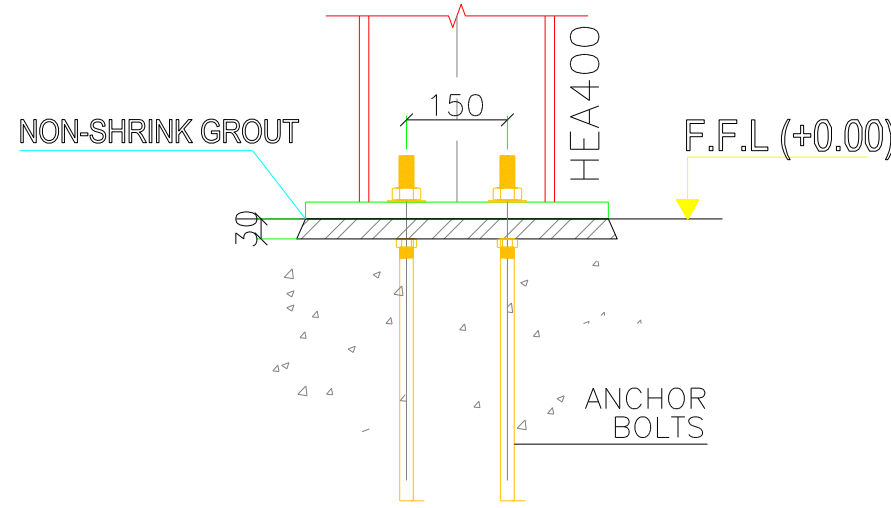
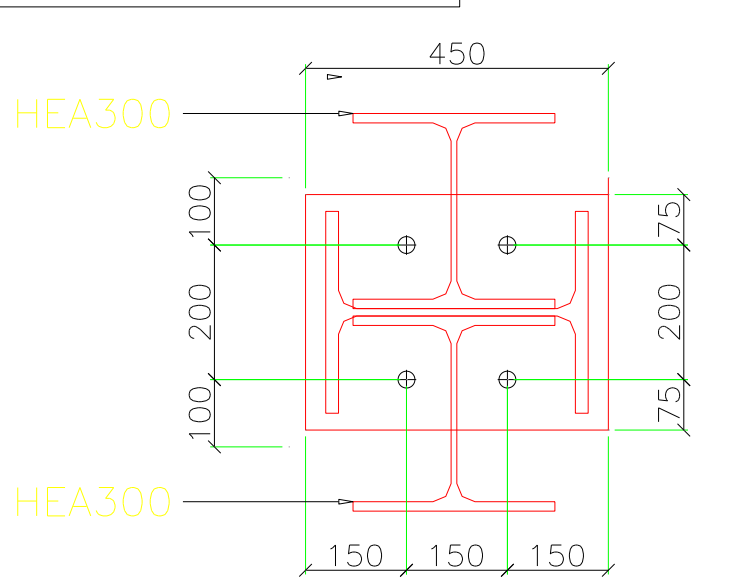
DETAIL B

ANCHOR BOLT DIA = 20
PLATE THICKNESS = 20

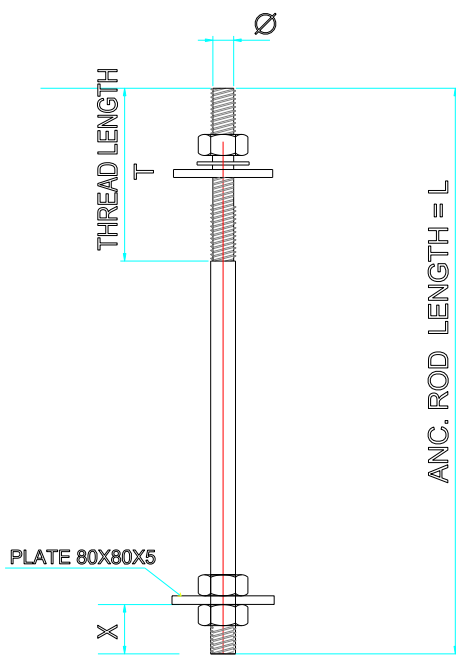


DETAIL A

ANCHOR BOLT DIA = 25
PLATE THICKNESS = 25



DETAIL C



ANCHOR BOLT DETAIL

QTY.	DIA. OF BOLT Ø	DIA. OF HOLE D	THREAD LENGTH T	ANC. ROD LENGTH L	THREAD LENGTH X	NOTE
	M16	22	85	485	25	
	M20	26	140	645	30	
	M25	30	165	900	45	
	M30	36	165	830	40	
	M36	42	165	985	45	
	>M36	Ø + 8	200	AS PER DESIGN		

- REFERENCE NOTES :-
- BRACING REACTIONS ARE TO BE CONSIDERED WITH THE MAIN FRAME REACTIONS.
 - ALL DIMENSIONS ARE IN MILLIMETERS.
 - BOTTOM OF ALL BASE PLATES ARE AT THE SAME ELEVATION. (UNLESS NOTED OTHERWISE)
 - ANCHOR BOLTS SPECS SHOULD BE GRADE (ST37)
Dip Galvanized,
FU=350 Mpa, Hex Nut and Washer DIN933
 - CONCRETE STRENGTH CONSIDERED $f_c=3.50\text{KN/cm}^2$

Notes:-

- ALL DIMENSIONS ARE IN MILLIMETERS & LEVELS IN METERS U.N.O.
- ALL BUILT UP SECTIONS ARE ST-52 & HOT ROLLED SECTIONS ARE ST-37.
- Web-butt welds are complete penetration weld flux back-up (18mm plate max.)
- Mild steel bolts (MSB) are yellow passivated.
- High strength bolts (HSB) are galvanized finish.
- High strength bolts and nuts are provided with flat washers, mild steel bolts are not provided with washers.
- washers, mild steel bolts are not provided with washers.
- High strength bolts must be used where indicated.
- Failure to do so can cause structural failure.

* MATERIAL PROPERTIES

SHAPE	GRADE	YIELD STRENGTH Fy [MPa]
PLATES	ST 52	355
HOT ROLLED SECTIONS	ST 44	280
ANGLES	ST 37	240
PIPES	ST 37	240
COLD FORMED	ASTM A653M Gr.340	340
BOLT GRADE	GRADE 10.9 U.N.O	640
RODS	ST 37	235

DESIGN LOADS

Mezz Dead Load (kN/m2)	= 3
Mezz Live Load (kN/m2)	= 5
Mezz Floor Cover Load (kN/m2)	= 1
Mezz Partition Load (kN/m2)	= 0.25
Mezz Collateral Load (kN/m2)	= 0.25
Wind Sped (m/s)	= 30
Exposure Category	= B
Design Code	= ECP-205
Closed/Open	= Open
Importance Wind	= 1.00
Building Code	= ECP - 2012
Serviceability limitations	= MBMA-02

CLIENT

PROJECT

CITY HUB MALL

CONSULTANT ENG.

JOB NO. : 0000 BUILDING No01

PROJECT NAME : CITY HUB MALL

BUILDING NAME : -

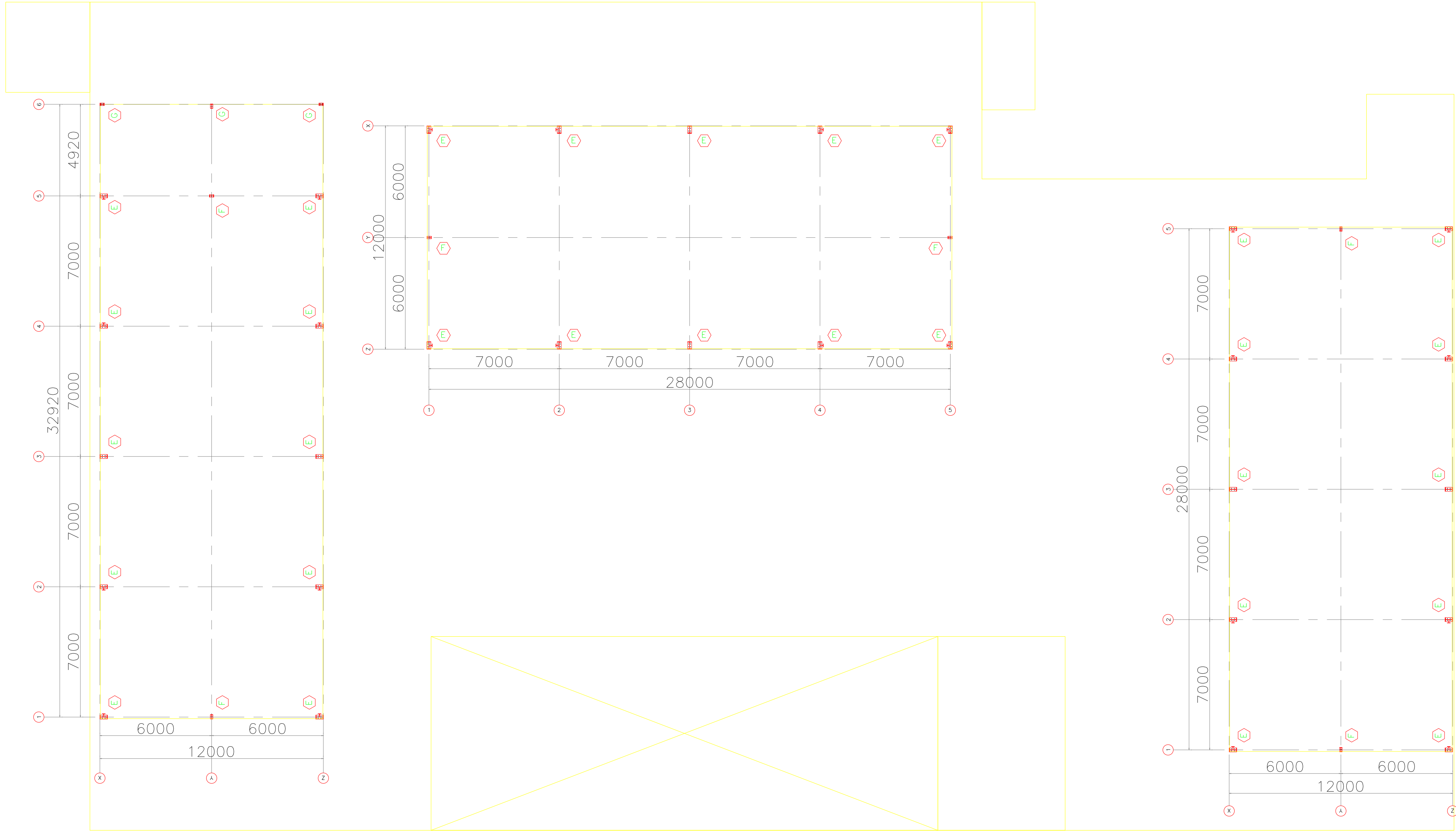
CUSTOMER : -

JOBSITE LOCATION : MANSOURA

DRAWING TITLE : ANCHOR BOLT PLAN-1

DWG. No.

01



ANCHOR BOLT PLAN
F.F.L(+5.75)

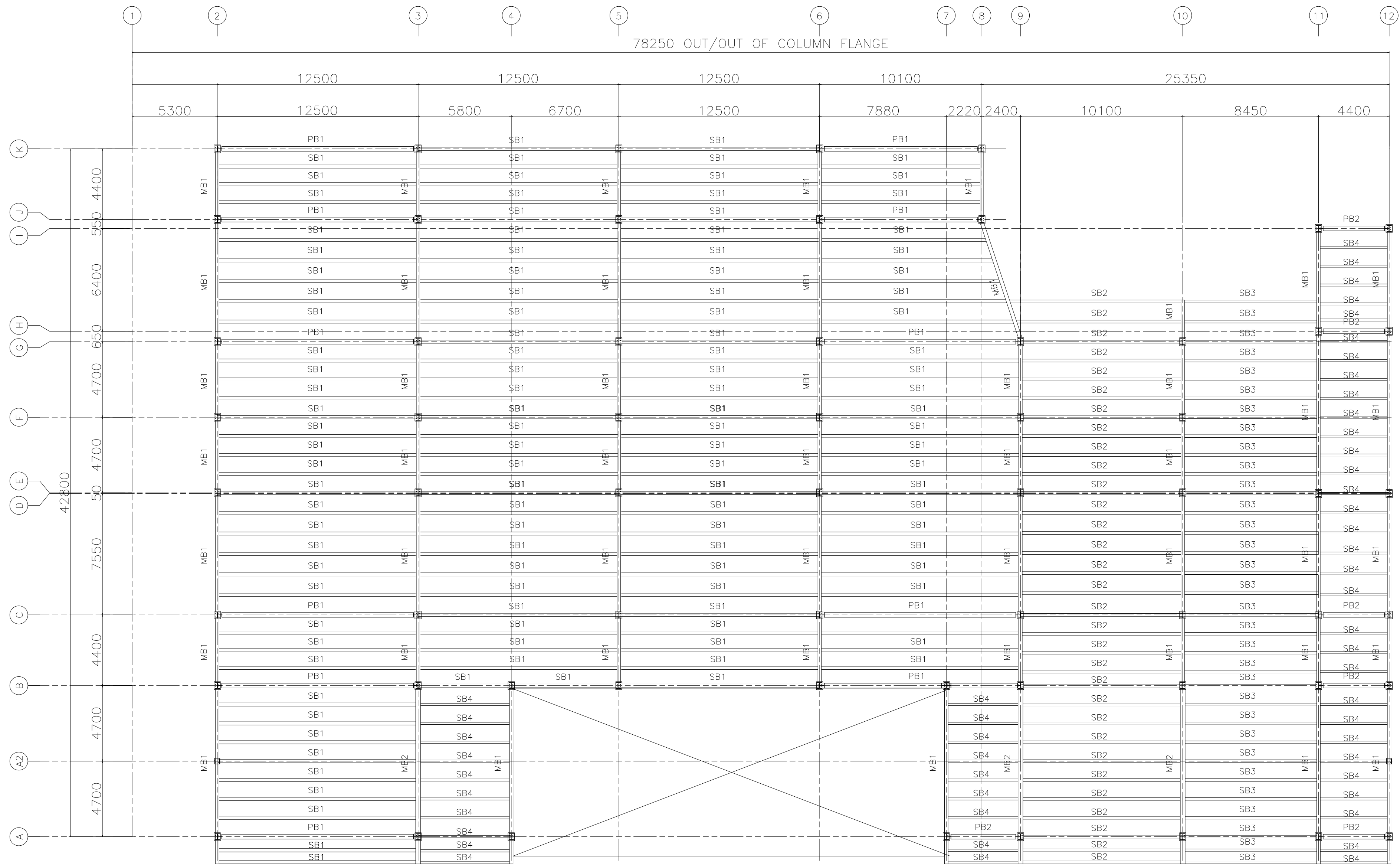
- Notes:—
- ALL DIMENSIONS ARE IN MILLIMETERS & LEVELS IN METERS U.N.O.
 - ALL BUILT UP SECTIONS ARE ST-52 & HOT ROLLED SECTIONS ARE ST-37.
 - Web-butt welds are complete penetration weld flux back-up (16mm plate max.)
 - Mild steel bolts (MSB) are yellow passivated.
 - High strength bolts (HSB) are galvanized finish.
 - High strength bolts and nuts are provided with flat washers, mild steel bolts are not provided with washers.
 - washers, mild steel bolts are not provided with washers.
 - High strength bolts must be used where indicated.
 - Failure to do so can cause structural failure.

MATERIAL PROPOERTIES		
SHAPE	GRADE	YIELD STRENGTH Fy [MPa]
PLATES	ST 52	355
HOT ROLLED SECTIONS	ST 44	280
ANGLES	ST 37	240
PIPES	ST 37	240
COLD FORMED	ASTM A653M Gr.340	340
BOLT GRADE	GRADE 10.9 U.N.O	640
RODS	ST 37	235

DESIGN LOADS	
Mezz Dead Load (kN/m2)	= 3
Mezz Live Load (kN/m2)	= 5
Mezz Floor Cover Load (kN/m2)	= 1
Mezz Partition Load (kN/m2)	= 0.25
Mezz Collateral Load (kN/m2)	= 0.25
Wind Spped (m/s)	= 30
Exposure Category	= B
Design Code	= ECP–205
Closed/Open	= Open
Importance Wind	= 1.00
Building Code	= ECP – 2012
Serviceability limitations	= MBMA–02

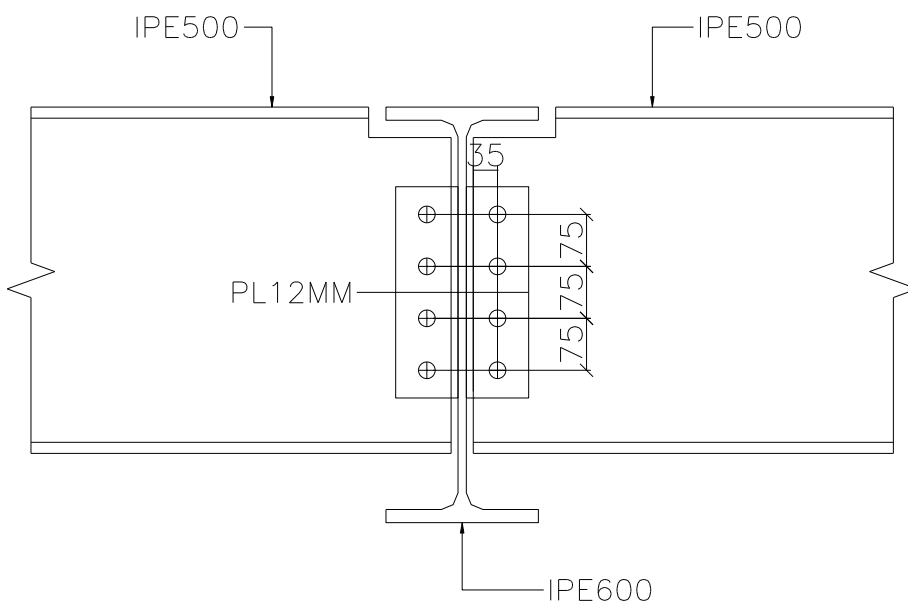
CLIENT	---
PROJECT	CITY HUB MALL
CONSULTANT ENG.	---

JOB NO.	: 0000	BUILDING NO01
PROJECT NAME	: CITY HUB MALL	
BUILDING NAME	: -	
CUSTOMER	: ---	
JOB SITE LOCATION	: MANSOURA	
DRAWING TITLE	: ANCHOR BOLT PLAN-2	DWG. No. 04



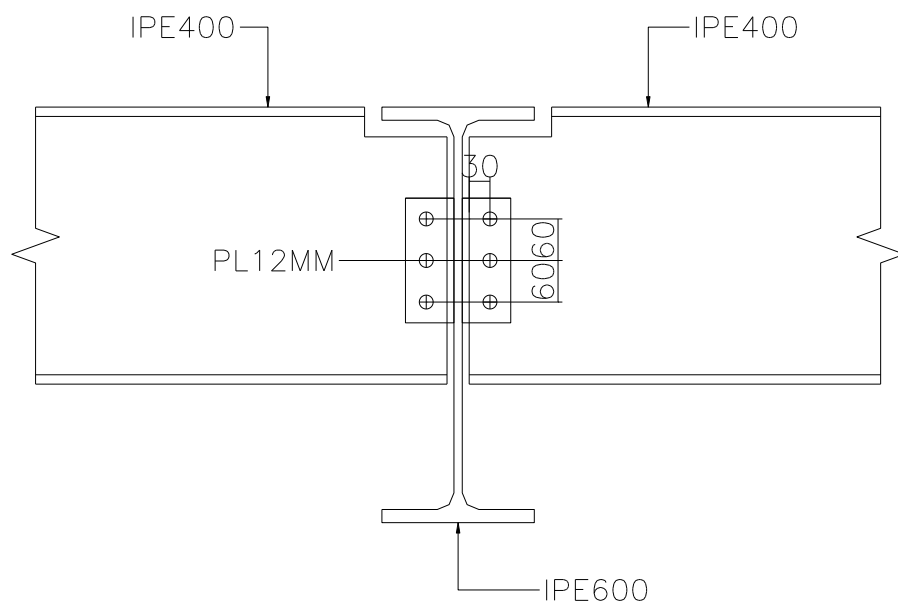
ROOF FRAMING PLAN
T.O.S(+5.60)

BOLTS = 4 M24 GRADE 8.8
PLATE THICKNESS = 12 MM



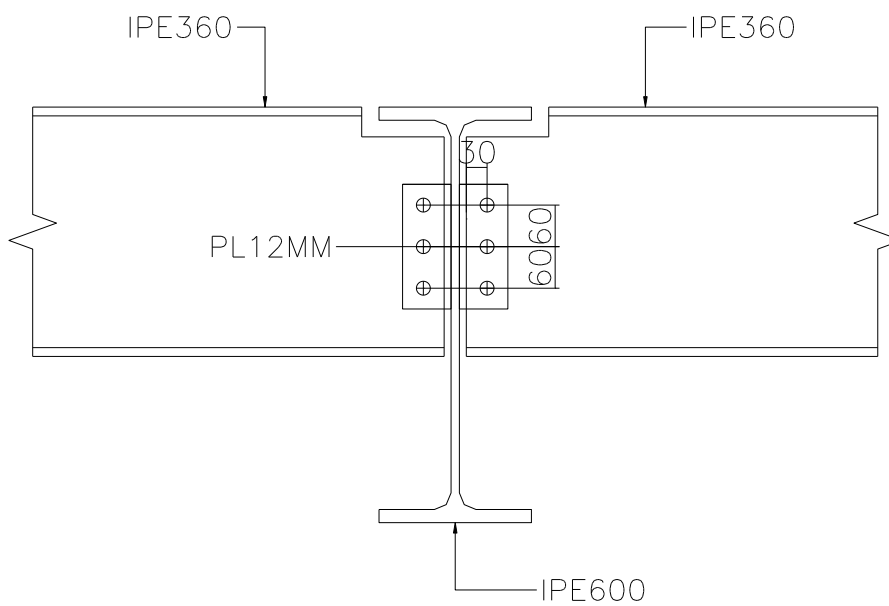
DETAIL MB1 ► SB1

BOLTS = 3 M20 GRADE 8.8
PLATE THICKNESS = 12 MM



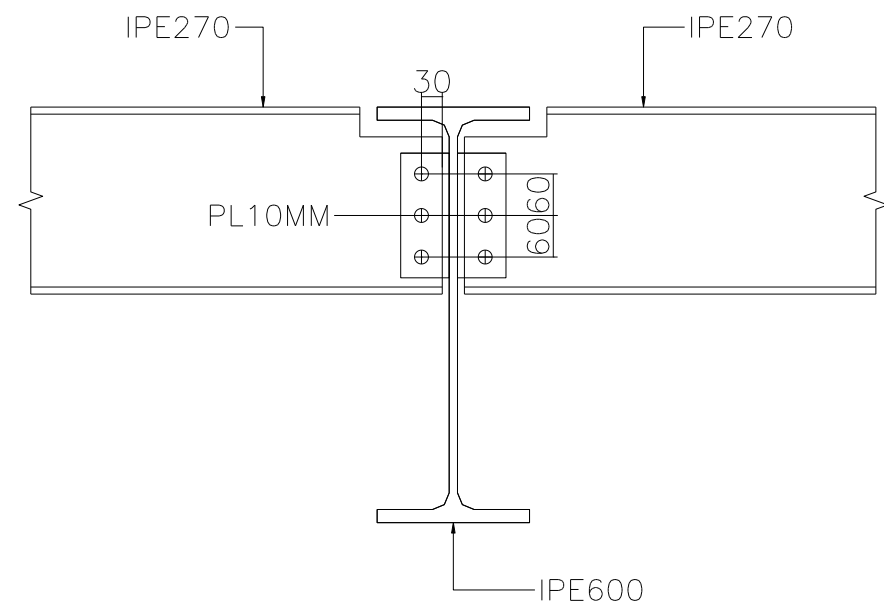
DETAIL MB1 ► SB2

BOLTS = 3 M20 GRADE 8.8
PLATE THICKNESS = 12 MM



DETAIL MB1 ► SB3

BOLTS = 3 M20 GRADE 8.8
PLATE THICKNESS = 10 MM



DETAIL MB1 ► SB4

Notes:-

- ALL DIMENSIONS ARE IN MILLIMETERS & LEVELS IN METERS U.N.O.
- ALL BUILT UP SECTIONS ARE ST-52 & HOT ROLLED SECTIONS ARE ST-37.
- Web-butt welds are complete penetration weld flux back-up (16mm plate max.)
- Mild steel bolts (MSB) are yellow passivated.
- High strength bolts (HSB) are galvanized finish.
- High strength bolts and nuts are provided with flat washers, mild steel bolts are not provided with washers.
- washers, mild steel bolts are not provided with washers.
- High strength bolts must be used where indicated.
- Failure to do so can cause structural failure.

MATERIAL PROPERTIES

SHAPE	GRADE	YIELD STRENGTH F _y [MPa]
PLATES	ST 52	355
HOT ROLLED SECTIONS	ST 44	280
ANGLES	ST 37	240
PIPES	ST 37	240
COLD FORMED	ASTM A653M Gr.340	340
BOLT GRADE	GRADE 10.9 U.N.O	640
RODS	ST 37	235

BEAMS TABLE

SN	NAME	PROFILE
1	PB1	HEA600
2	PB2	HEA400
3	MB1	IPE600
4	MB2	HEA600
5	SB1	IPE500
6	SB2	IPE400
7	SB3	IPE360
8	SB4	IPE270

CLIENT

PROJECT

CITY HUB MALL

CONSULTANT ENG.

JOB NO.	: 0000	BUILDING NO01
PROJECT NAME	: CITY HUB MALL	
BUILDING NAME	: -	
CUSTOMER	: ---	
JOB SITE LOCATION	: MANSOURA	
DRAWING TITLE	: ROOF FRAMING PLAN-1	DWG. No.
		02